

PART OF THE E.1/2, OF SEC. 2, T.7N., R.2E.;
AND PART OF THE S.1/2, OF SEC. 26, & PART OF SEC. 35, T.8N., R.2E., S.L.B. & M.

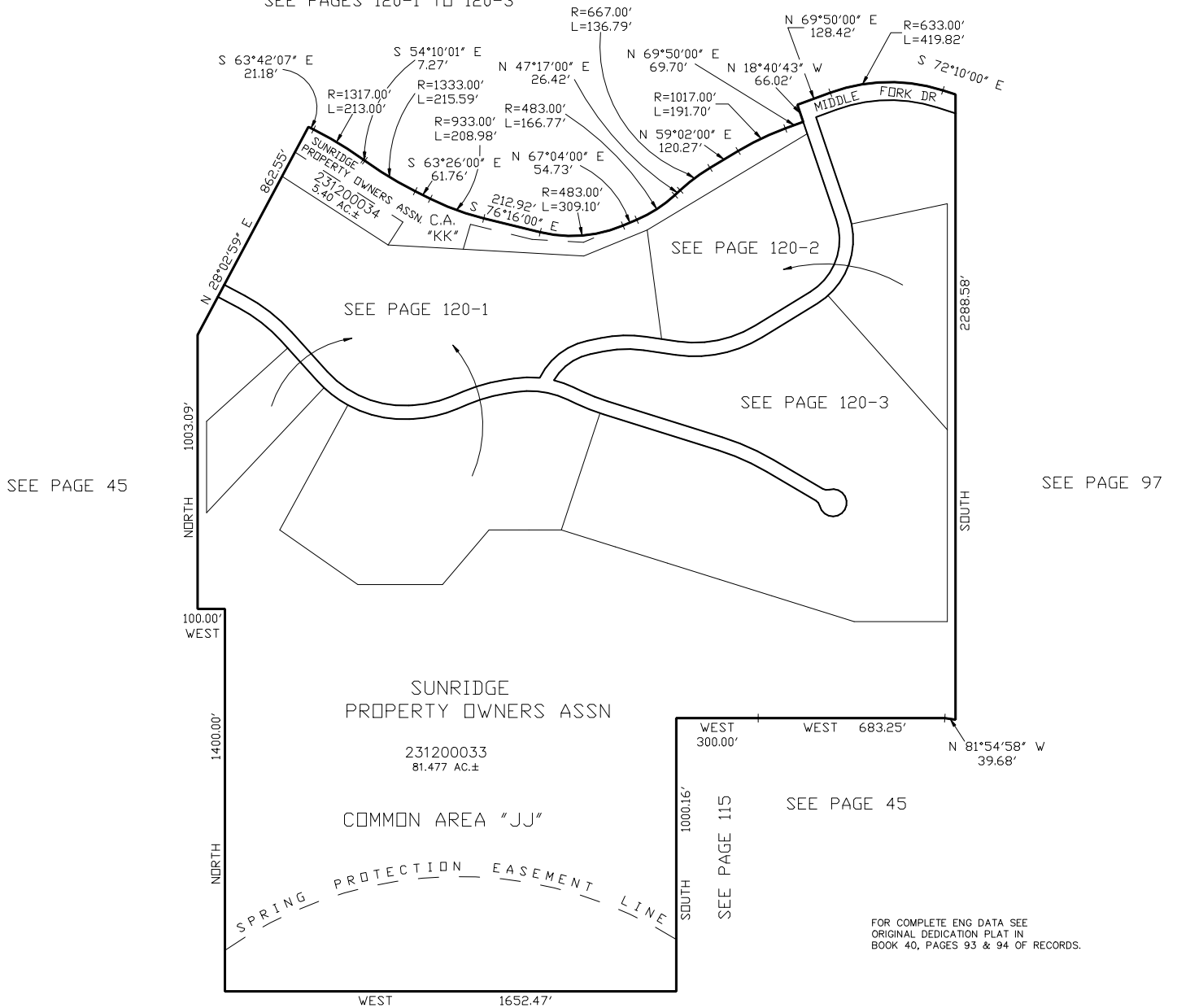
SUNRIDGE HIGHLANDS NO. 11

A CLUSTER SUMMER HOME SUBDIVISION
COMMON AREAS "JJ" & "KK"

TAXING UNIT: 58

IN WEBER COUNTY
SCALE 1" = 300'

SEE PAGES 120-1 TO 120-3



SEE PAGE 45

SEE PAGE 97

SEE PAGE 45